

**hansa** *One*  
*One*  
*Luxury Redefined*

Site Address:  
101, Village Road, Nungambakkam,  
Chennai 600006

Hansa Estates Private Limited  
19, Wheatcroft Road,  
Chennai 600006

[www.hansaestates.com](http://www.hansaestates.com)

Reach us:  
93807-18989 / 93807-18901/  
93807-18993/93807-18997

[sales@hansaestates.com](mailto:sales@hansaestates.com)

TN/29/Building/0001/2022



**hansa**  
*One  
The  
One*

What is Luxury?

Is it time with loved ones? A work-life balance?  
A home in the heart of the city? A zen living?

Is it simplicity? or effortless convenience?

Is it attention to detail?

What if its all of the above?

Welcome to **hansa** *One*  
*One*  
*One*

Come Experience the Luxury  
of Understated Grandeur,  
of Practical Perfection &  
a Life Oh-So-Good!

Go what does <sup>hansa</sup> *One* have, you ask?



Hansa 101 (pronounced, Hansa One-Oh-One) is designed by one of Chennai's leading architectural firms. This gem of a 9 storey building is situated at the heart of Nungambakkam.

*Step into 9 storeys of perfection!*

1

An inviting lobby enabled with touch free entry control acts as the first safety barrier from all people outside.

# Site Plan



*Location. Location. Location*

2

Located at the center of the city, the property is less than a few minutes away\* from anywhere you want to go! Close to schools, colleges, parks & theaters. Why get stuck in traffic, when you can choose to live here!

Priced aggressively, Hansa One-Oh-One is a right fit irrespective of you being a first time buyer, or a seasoned investor.



\* may vary based on intensity of traffic



3

### *Something to stay Fit & Fabulous*

An equipped gym to help you achieve your fitness goals!



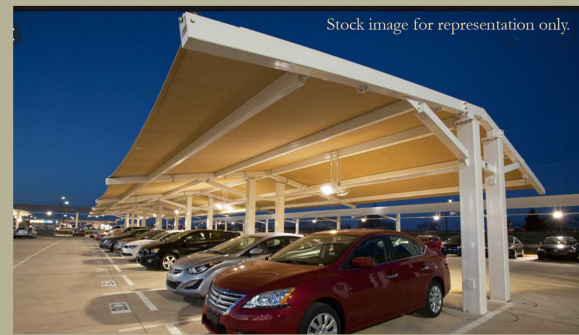
Stock image for representation only.

4

### *Some TLC for your cars*

We know how important your car is to you!  
So no car will be left uncared for. No car will be left unprotected from the elements!  
Do you have more than one car to park? Opt for the uber smart mechanical parking to optimise your parking space.. and voila, two cars in one slot!

Stock image for representation only.





Stock images for representation only.

## A perfect work-life Balance

5

A 9-5 work space. that becomes a space to chill after hours, with the possibility of movie screening time with your family or neighbours! What more can anyone ask for? some pop corn perhaps?!

*(did we mention we have a pantry where you can make yourself some?)*





Stock image for representation only.

## *An Oasis of Green*

6

A landscaped terrace garden for that Zen feel, or for a celebratory get together, for an evening stroll or a brisk walk.. Enjoy 6000sft of green in the heart of Nungambakkam



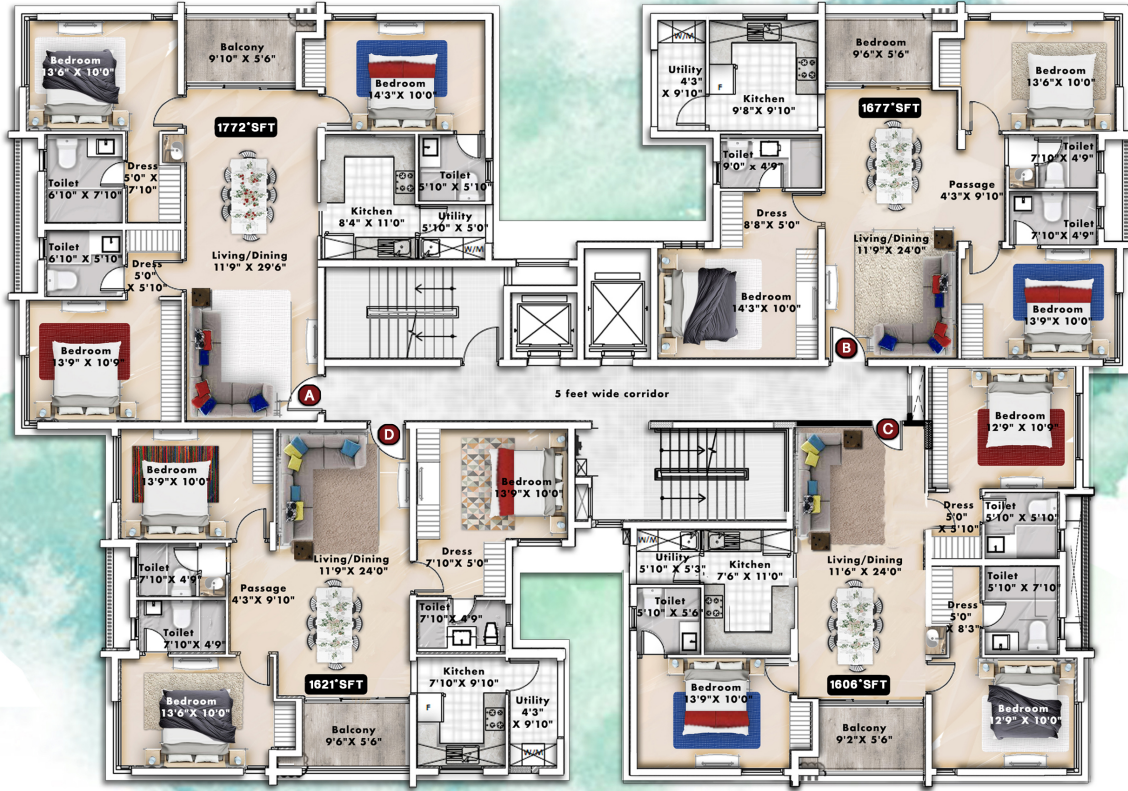


## Club House Floor (Floor 1)

7

*So much to offer*

What can we say- its all thought out!  
 A records room for the association,  
 much needed WFH areas, a gym,  
 and of course, 3 gorgeous apartments

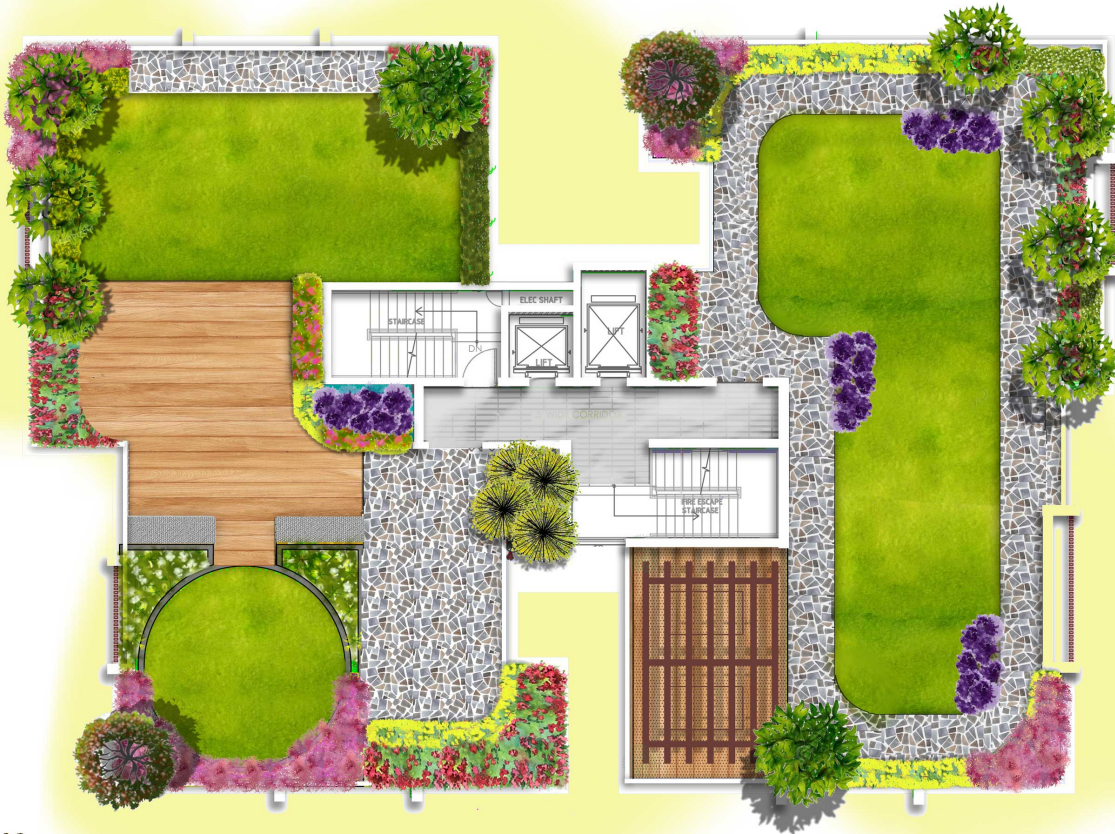


Typical Floor Plan (Floors 2-9)

*Apartments detailed to Practical Perfection:*

8

Well planned, well ventilated apartments  
 ... After all, God is in the details!

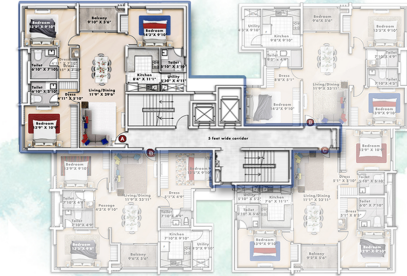
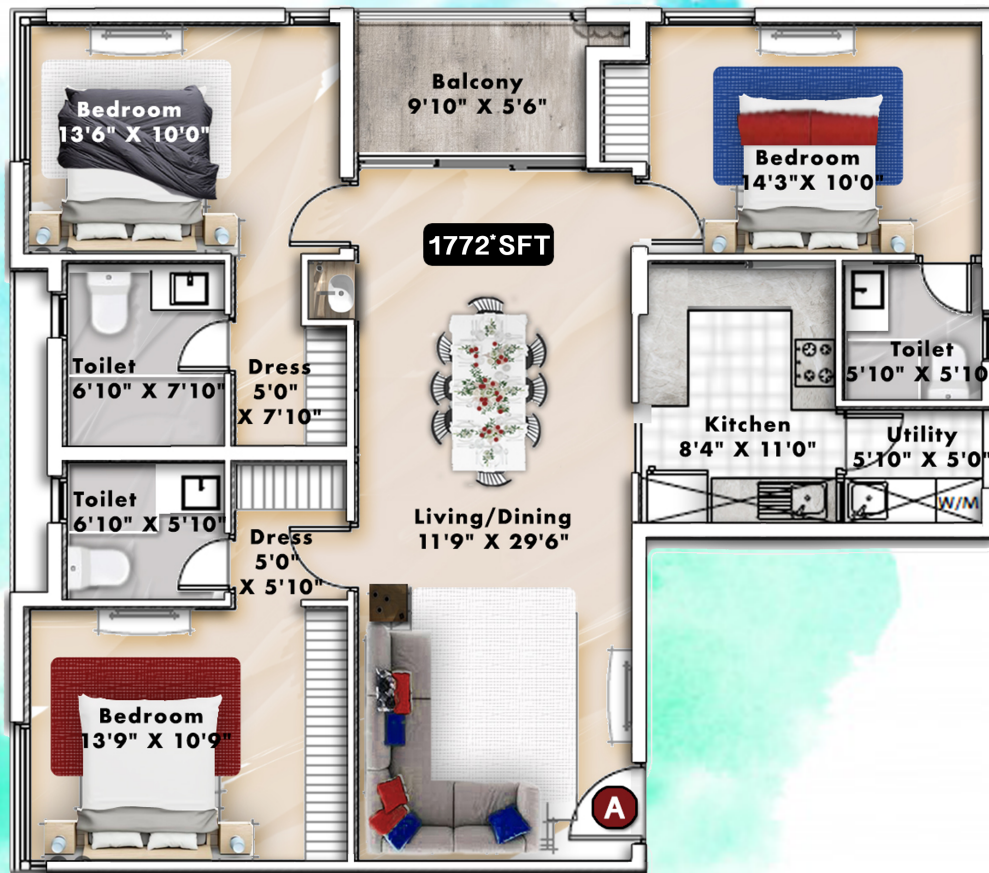


## Terrace Floor Plan

*A terrace floor to delight your senses*

9

6000 sq ft of manicured terrace area for spending a relaxed evening with your loved ones. The cheery terrace is ideal for parties, birthdays or a simple evening of relaxation.

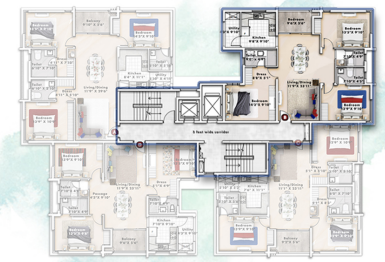
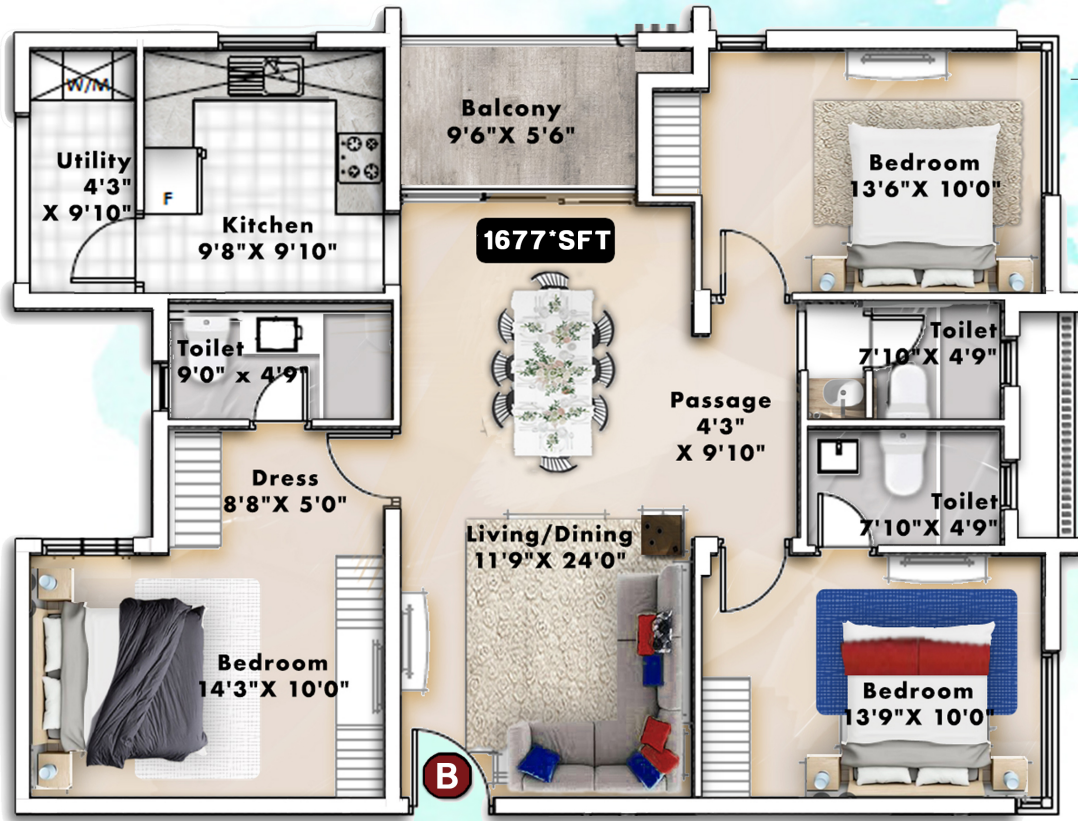


This apartment located in the north-west of the block (front of site), has 3 bedrooms with attached toilets. An inviting living cum dining room opens on to an airy balcony . The dining is serviced by a large kitchen with an independent utility area.

*Apartment Type A*

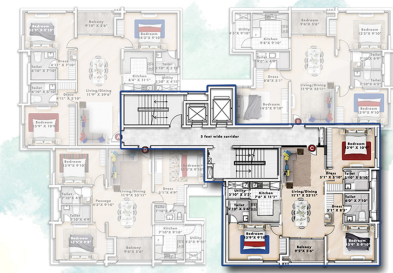
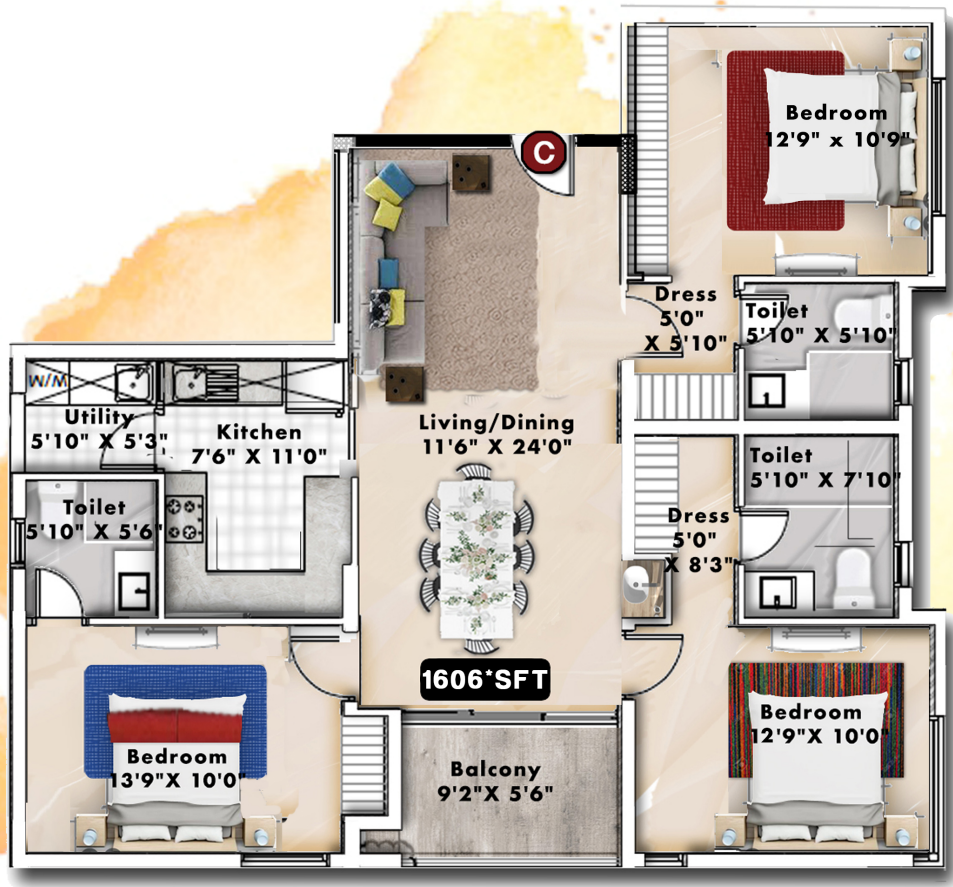
10

Apartment Area: 1772\* sq.ft

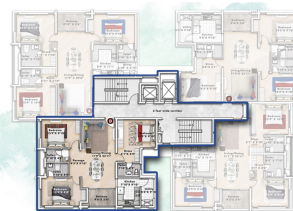
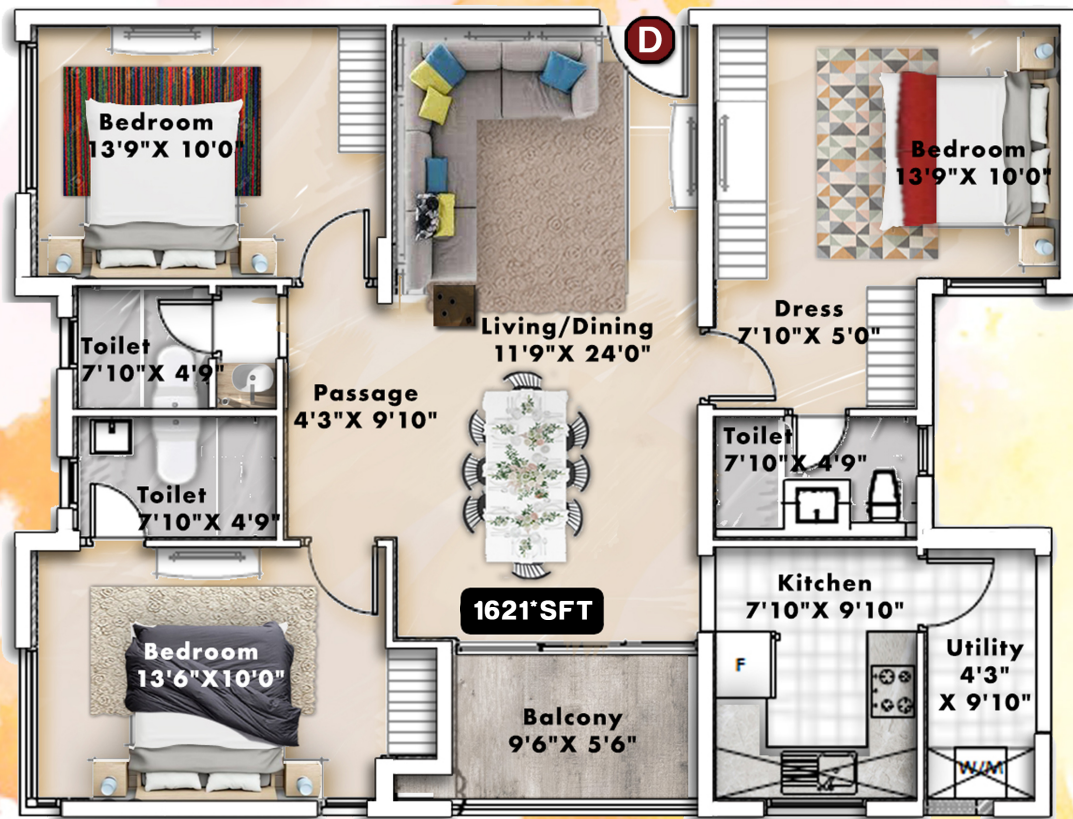


This apartment located in the north-east of the block (rear of site), has 3 bedrooms with attached toilets. An inviting living cum dining room opens on to an airy balcony. The dining is serviced by a large kitchen with an independent utility area.

*Apartment Type B*



This apartment located in the south-east of the block (rear of site), has 3 bedrooms with attached toilets. An inviting living cum dining room opens on to an airy balcony. The dining is serviced by a large kitchen with an independent utility area.



This apartment located in the south-west of the block (front of site), has 3 bedrooms with attached toilets. An inviting living cum dining room opens on to a spacious balcony. The dining is serviced by a large kitchen with an independent utility area.

*Apartment Type D*

13

Apartment Area: 1621\* sq.ft

## For further information contact:

93807-18989

93807-18901

93807-18993

93807-18997

93807-18942

or email us at [sales@hansaestates.com](mailto:sales@hansaestates.com)